



C&S Architects, Engineers & Landscape Architect, LLC  
 499 Col. Eileen Collins Blvd.  
 Syracuse, New York 13212  
 Phone: 315-455-2000  
 Fax: 315-455-9667  
 www.cscos.com

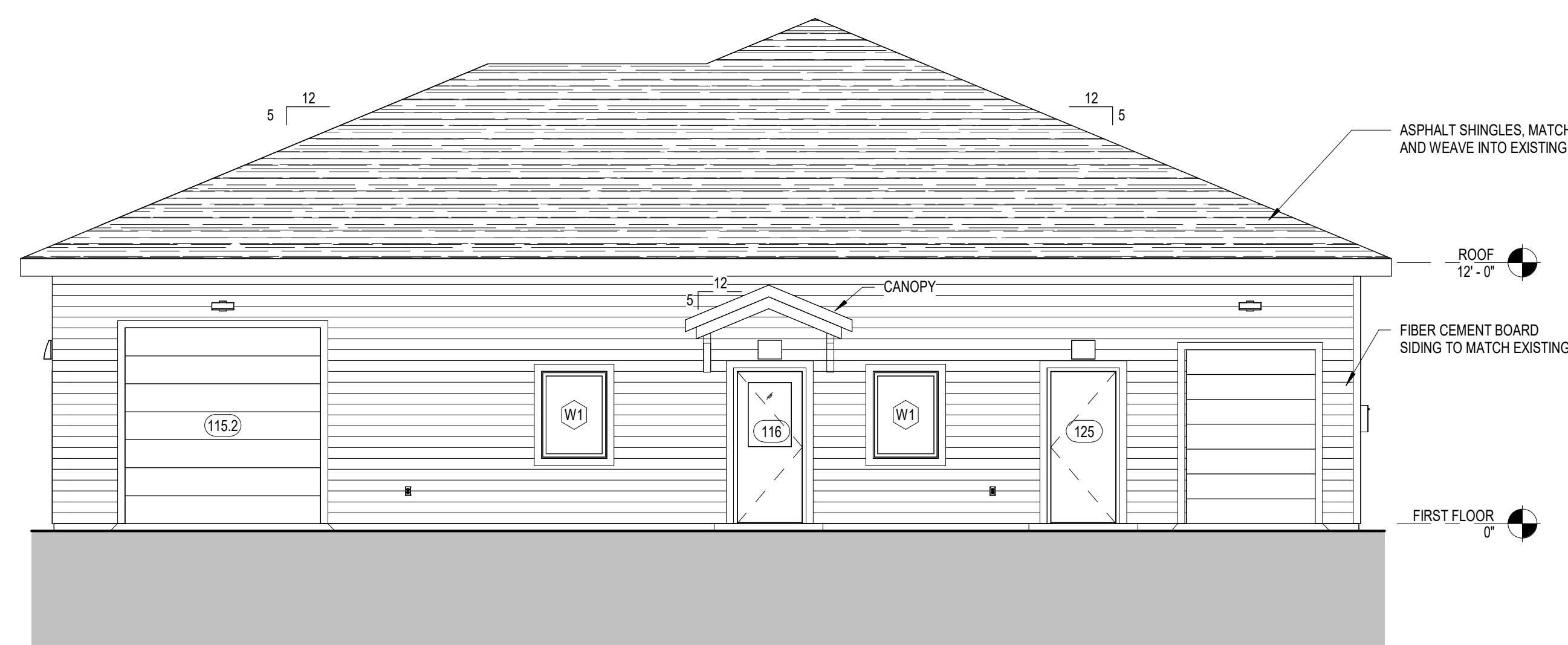


**BUILDING ADDITION AND RENOVATION**  
**NORTH AREA MEALS ON WHEELS**  
**413 CHURCH STREET**  
**NORTH SYRACUSE, NEW YORK 13212**

MARK	DATE	DESCRIPTION
REVISIONS		
PROJECT NO:	A04.001.001	
DATE:	AUGUST 15, 2024	
DRAWN BY:	K.B. PUGH	
DESIGNED BY:	K.B. PUGH	
CHECKED BY:	M.W. LAMONTAGNE, AIA	
NO ALTERATION PERMITTED HEREON EXCEPT AS PROVIDED UNDER SECTION 7209 SUBDIVISION 2 OF THE NEW YORK EDUCATION LAW		

ELEVATIONS

A-202



**C1 NORTH ELEVATION**  
 SCALE: 3/16" = 1'-0"



**A1 EAST ELEVATION**  
 SCALE: 3/16" = 1'-0"

