

1

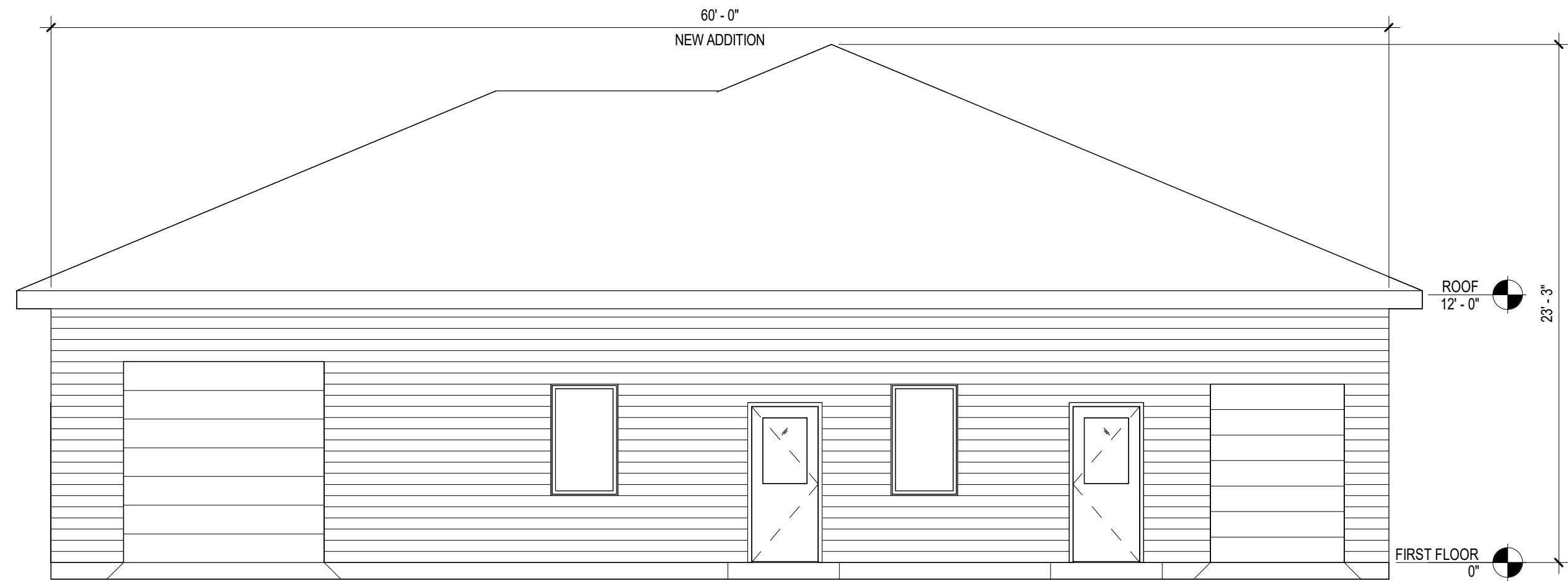
2

3

4

D

D



C

C



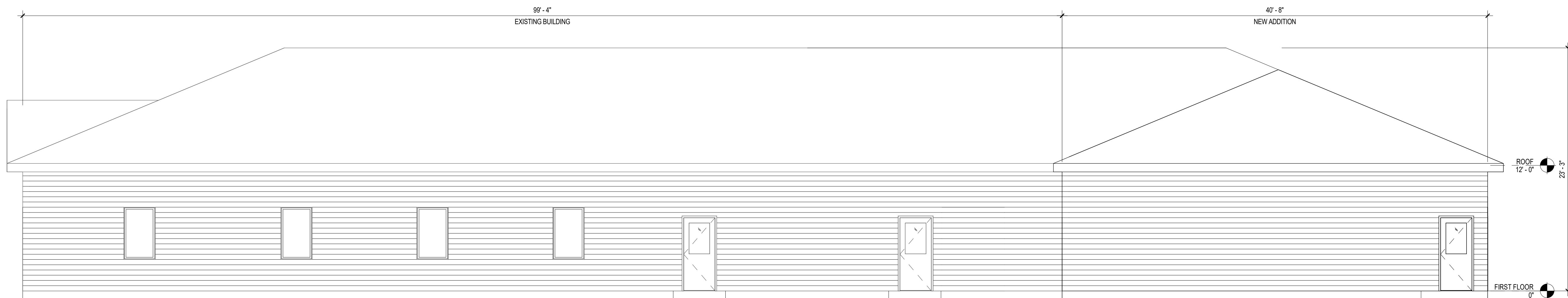
C1 NORTH ELEVATION

SCALE: 3/16" = 1'-0"



B

B



A

A



A1 EAST ELEVATION

SCALE: 3/16" = 1'-0"



1

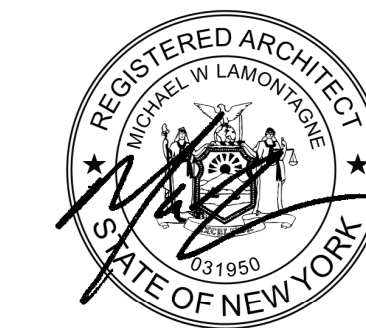
2

3

4



C&S Architects, Engineers &
Landscape Architect, LLC
499 Col. Eileen Collins Blvd.
Syracuse, New York 13212
Phone: 315-455-2000
Fax: 315-455-9667
www.cscos.com



**BUILDING ADDITION AND RENOVATION
NORTH AREA MEALS ON WHEELS
413 CHURCH STREET
NORTH SYRACUSE, NEW YORK 13212**

MARK	DATE	DESCRIPTION
REVISIONS		

PROJECT NO: A04.001.001
DATE: JUNE 14, 2024
DRAWN BY: K.B. PUGH
DESIGNED BY: K.B. PUGH
CHECKED BY: M.W. LAMONTAGNE, AIA

NO ALTERATION PERMITTED HEREON
EXCEPT AS PROVIDED UNDER SECTION
7209 SUBDIVISION 2 OF THE NEW YORK
EDUCATION LAW

ELEVATIONS

A-202