

#1 - 230-19 A.(5) – Designated Highway Setback of a Principal Structure – for a reduction in the highway overlay from 140 feet to 105.9 feet

#2 - 230-16 E.(4)(b)[1] – Front Yard Minimum Setback – a reduction in the front yard setback from 50 feet to 48.5 feet for the principal structure

#3 - 230-19 A(5) Designated Highway Setback of an Accessory Structure and 230-16 E.(4)(c)[1] – Accessory Structure Detached, Front Yard - for a reduction in the highway setback from 90 feet to 64.8 feet

#4 - 230-16 E.(4)(b)[2][a] – Side Yard Minimum – for a reduction in the side yard setback from 25 feet to 6.5 feet to allow for a canopy

#5 - 230-19 A.(5) – Designated Highway Setback- for a reduction in the highway setback from 70 feet to 52.3 feet to allow for a parking area

#6, #7, #8 & #9 – 230-16 E.(5)(a) – Supplemental District Design Standards – Perimeter Landscape Strip:

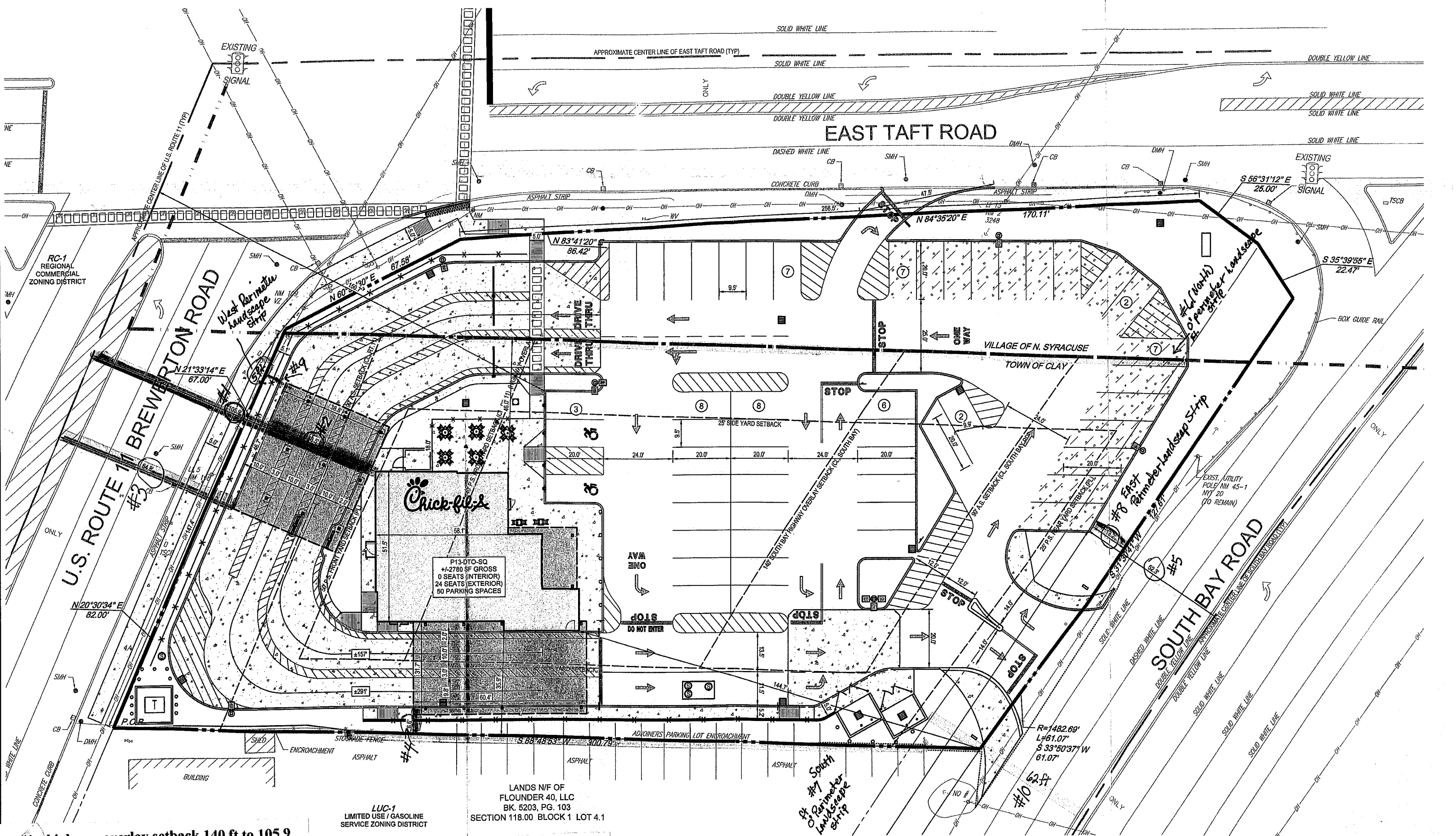
#6 - for a reduction in the north perimeter landscape strip from 15 feet to 0 feet;

#7 - for a reduction in the south perimeter landscape strip from 15 feet to 0 feet;

#8 - for a reduction in the east perimeter landscape strip from 15 feet to 13.2 feet;  
and

#9 - for a reduction in the west perimeter landscape strip from 15 feet to 5 feet;

#10 - 230-19 A.(5) - Designated Highway Setback of an Accessory Structure – for a reduction in the highway setback from 90 feet to 62 feet to allow for the dumpsters



#1 - highway overlay setback 140 ft to 105.9

#2 - front yard setback from 50 to 48.5

#3 - highway set back accessory structure 90 ft to 64.8

#4 - side yard setback 25 ft to 6.5 ft

#5 - highway setback 70 ft to 52.3

#6 - north landscape strip 15 ft to 0 ft  
 #7 - south landscape strip 15 ft to 0 ft  
 #8 - east landscape strip 15 ft to 13.2 ft  
 #9 - west landscape strip 15 ft to 5 ft

#10 - highway setback 90 feet to 62 ft for dumpsters

LUC-1  
 LIMITED USE / GASOLINE  
 SERVICE ZONING DISTRICT

LANDS N/F OF  
 FLOUNDER 40, LLC  
 BK. 5203, PG. 103  
 SECTION 118.00 BLOCK 1 LOT 4.1

**Chick-fil-A**

P13-DTO-SQ  
 41,278.0 SF GROSS  
 0 SEATS (INTERIOR)  
 24 SEATS (EXTERIOR)  
 50 PARKING SPACES

R=1482.69'  
 L=61.07'  
 S 33°50'37" W  
 61.07'

#10 62 ft

#7 South  
 of Rainmeter  
 landscape  
 strip

#8 East  
 Rainmeter landscape  
 strip

#9 North  
 of Rainmeter  
 landscape  
 strip

West Rainmeter  
 landscape  
 strip

U.S. ROUTE 11  
 BREWERTON ROAD

EAST TAFT ROAD

SOUTH BAY ROAD

VILLAGE OF N. SYRACUSE  
 TOWN OF CLAY

RC-1  
 REGIONAL  
 COMMERCIAL  
 ZONING DISTRICT